

# PRODUCT OVERVIEW

[illegible]

# INDUSTRIAL HARDWARE

**Our team spirit is “How can we help” and our motivation is to deliver solutions to gain our customers market advantages.**

At FATH Inc., the North American subsidiary of FATH based in Orlando, Florida, we exemplify a customer-centric approach in delivering industrial hardware solutions. With over 30 years of expertise, we offer a comprehensive portfolio of more than 16,000 products, including over 7,000 unique items available for immediate shipment. Our products, ranging from locks, handles, hinges, and gaskets to advanced TANlock modular access control systems, are designed to enhance productivity and flexibility in industrial workflows. By leveraging our international purchasing and production network, we ensure a balance of price, quality, and innovation tailored to the specific needs of our customers, fostering seamless integration into diverse OEM applications.

Our customer-oriented philosophy is deeply embedded in our operations, prioritizing trust, respect, and long-term partnerships. Established in 2003, our Orlando-based subsidiary operates a 43,000-square-foot distribution center and a fully staffed R&D department to deliver customized solutions, such as components for aluminum extrusion and intralogistics systems, that drive market advantages for our clients. Our “How can we help” ethos ensures that customer service permeates every department, from product conception through to delivery logistics. Additionally, our focus on social sustainability, including support for local communities and environmentally responsible practices, strengthens our reputation as a partner dedicated to enhancing customer experience while contributing positively to the broader ecosystem.

And this is what we mean by ENRICH YOUR WORKING LIFE.

*“Where others see obstacles, we find quick and simple solutions for our customers.”*

*Armin Fink*



**Contact us: [info.us@fath24.com](mailto:info.us@fath24.com)**

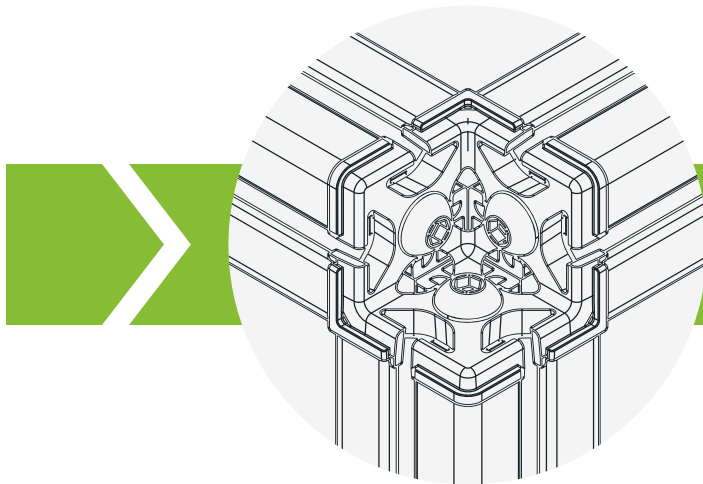
# FATH CUSTOM COMPONENTS

Have it done.

New, rapidly developing markets require short response times to gain a clear competitive advantage. We are at your side as a partner with the entire expertise of our FATH Ecosystem and start finding solutions right away.

Pragmatic, fast, and with proof of concept.

As a driver of innovation, we combine our concentrated power of expertise, extensive experience, and even more developer mindset for you. We support you in implementing your innovation quickly and holistically.



## ✓ INNOVATION

Development expertise  
and prototyping

Solution finding, 3D printing, pre-series  
testing, and series production  
all from a single source



## ✓ FLEXIBILITY

Outstanding  
technical expertise

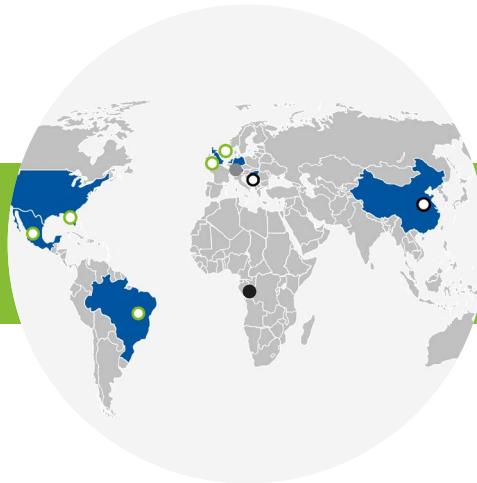
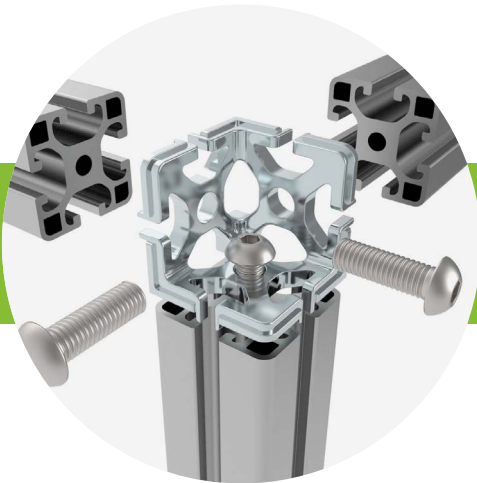
Comprehensive range  
of machinery  
with global infrastructure

**Roll up those sleeves and get it going:**

- Understand requirements
- Develop solutions
- Produce samples
- Feedback

— 14 DAYS —

- Quotation
- Series production



### ✓ 35 YEARS OF EXPERIENCE

Global market leader in components for aluminum profile systems

We supply all common profile systems, deliver to system houses, and connect the various ecosystems.

### ✓ RELIABLE SUPPLY

Global supply chain and fully integrated manufacturing

High availability, fast delivery, resilient supply chains, and large volumes

# SUCCESS STORY 1: GRAVITY LOCK



## 1 CHALLENGE:

In some regions, bears rummaging through garbage cans is a widespread problem. This is increasingly affecting the safety of both humans and animals.



## 2 SOLUTION:

The specially designed lock system for waste bins cannot be opened by bears thanks to its mechanical locking mechanism, but automatically opens for garbage trucks and haulers, when the waste bin is emptied upside down.



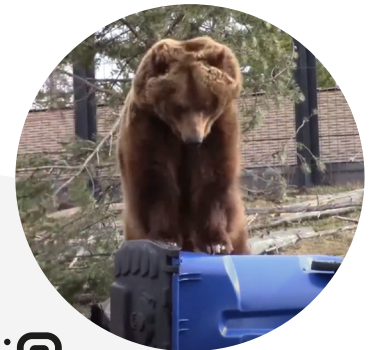
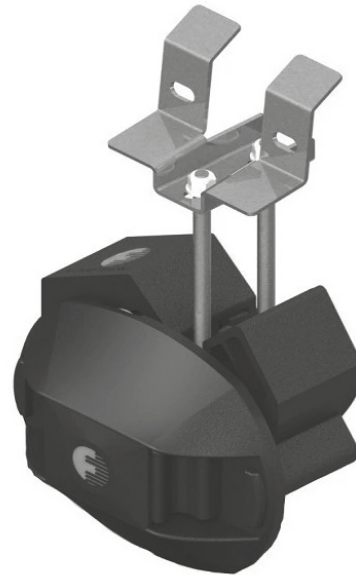
## 3 RESULTS:

The widespread introduction of bear-proof waste bin locks has significantly reduced the conflict and thus also the risk—for both humans and animals.



## 4 ADVANTAGES FOR THE CUSTOMER:

- Reduction of conflict situations and protection against damage
- Increased safety in bear areas
- Efficient waste management



➔ Watch the Video

# SUCCESS STORY 2: ERGOSAFE

## ERGOSAFE: Redefining Enclosure Security

The telecom industry has long battled theft, with copper wires and batteries often targeted in smash and grab attacks. One of our customers brought this challenge to us, and after months of design and testing, the ERGOSAFE was born. It is a revolutionary swing handle that sets a new standard for enclosure protection.

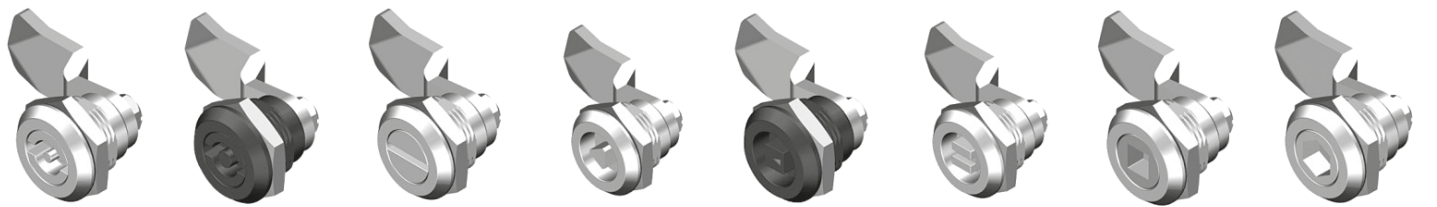
Unlike anything else on the market, the ERGOSAFE features outside the sealed area compression, offering unmatched security while maintaining quick installation and user-friendly operation. Its advanced padlock mechanism ensures that even if tampered with, the enclosure stays closed and can only be reopened with proper tools. This saves both time and costly repairs.

Today, ERGOSAFE is trusted across the United States in critical infrastructure applications, including telecom sites, energy facilities, and land-based equipment enclosures. It is another example of how FATH delivers real-world solutions to real-world challenges.

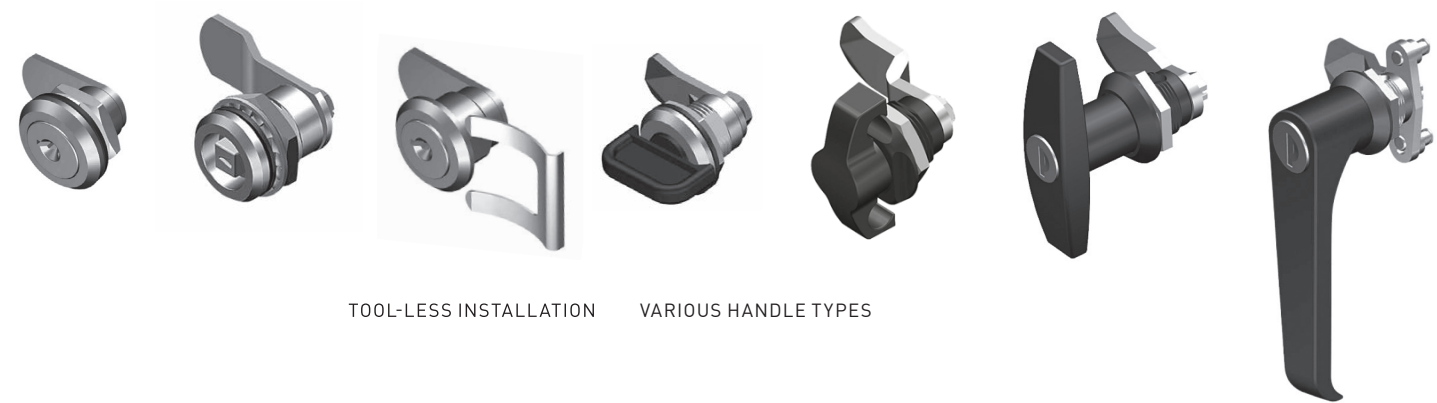


***Fath simplifies  
doing business  
like no one else.”***

**QUARTER TURN LOCKS**



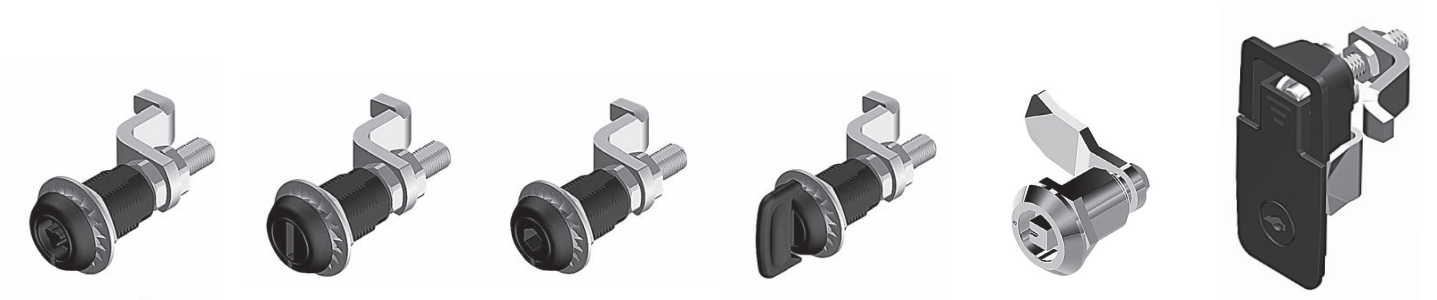
MULTIPLE DRIVE TYPES



TOOL-LESS INSTALLATION      VARIOUS HANDLE TYPES

**COMPRESSION LATCHES**

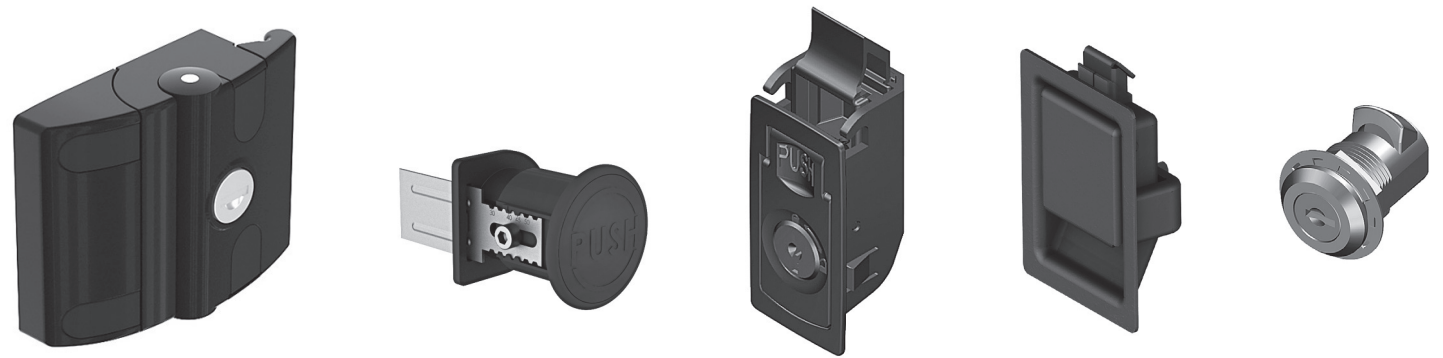
STEEL - STAINLESS STEEL - ZINC DIE CAST



KEY LOCKING - TOOL LOCKING

ADJUSTABLE

**SLAM / SLIDE LATCHES**



LARGE SLAM LATCHES WITH INTERNAL RELEASE

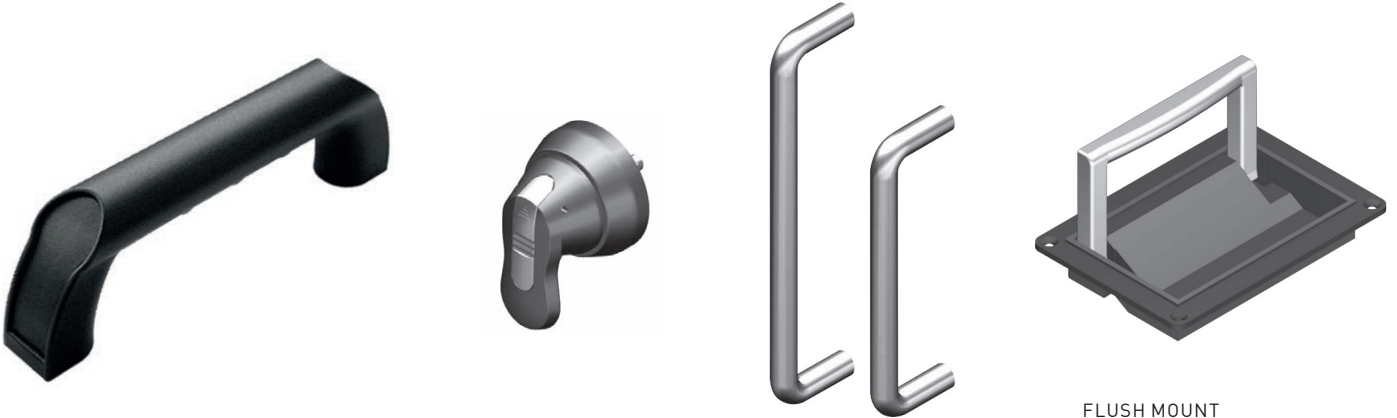
SLAM LATCHES

SLIDE LATCHES

PUSH-TO-CLOSE SLAM LATCHES

**HANDLES**

POLYAMIDE - ALUMINUM - STEEL - STAINLESS STEEL



TOOL-LESS INSTALLATION

FLUSH MOUNT



SWING HANDLES

STAINLESS STEEL VERSIONS

CUSTOM HANDLES

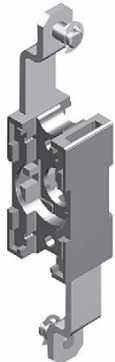
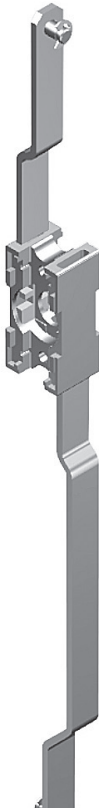
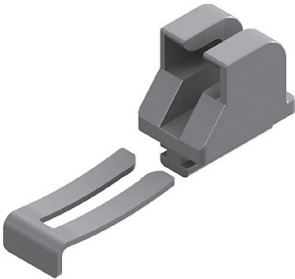


PAD-LOCKABLE

COMBINATION LOCKS

CAM AND ROD CONTROL

SWING HANDLE ACCESSORIES



ROD ADAPTER

ROD GUIDES

RODS

ROD CONTROLS

**COVER STAYS**

NICKEL PLATED STEEL – STAINLESS STEEL – ZINC PLATED STEEL



HORIZONTAL AND VERTICAL MOUNTING



POSITION LOCKING

**SURFACE MOUNT HINGES**

POLYAMIDE - ALUMINUM - STEEL - STAINLESS STEEL - ZINC DIE CAST - SHEET METAL



DETACHABLE AND NON-DETACHABLE



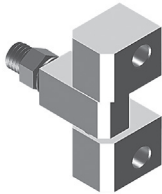
WITH LOCKING LEVER



FRICTION

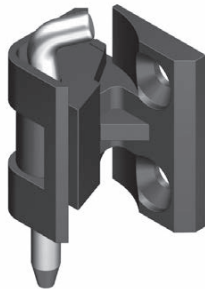
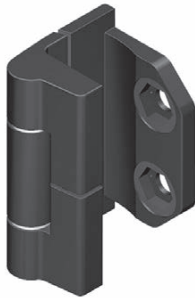


BOLT-ON



**SEMI-CONCEALED HINGES**

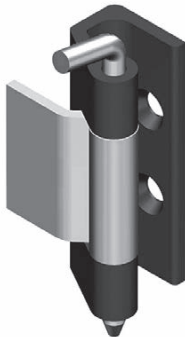
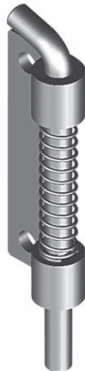
STAINLESS STEEL - ZINC DIE CAST



SCREW MOUNTING - STUD MOUNTING - TOOL-LESS MOUNTING

**CONCEALED HINGES**

STEEL - STAINLESS STEEL - ZINC DIE CAST - SHEET METAL



SCREW MOUNTING - STUD MOUNTING - WELD-ON

ACCESSORIES

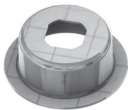
KEYS



COVERS



SCREW RETENTION



LIFTING EYES



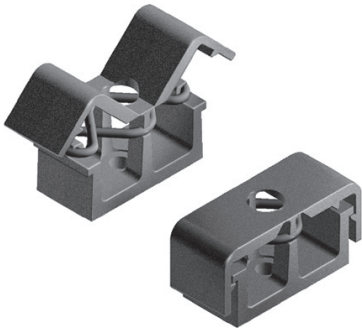
LEVELLING FEET



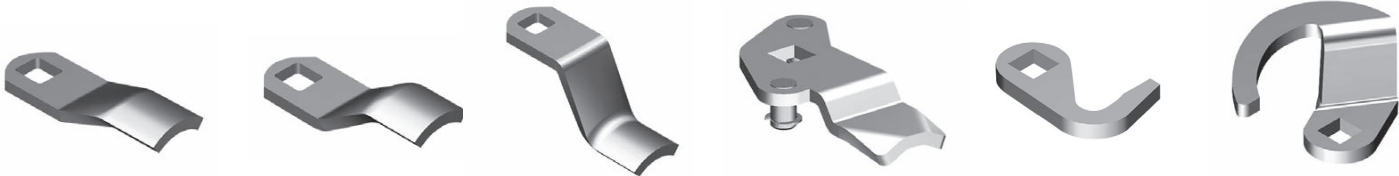
BALL CATCHES AND MAGNETIC CATCHES



CABLE MANAGEMENT

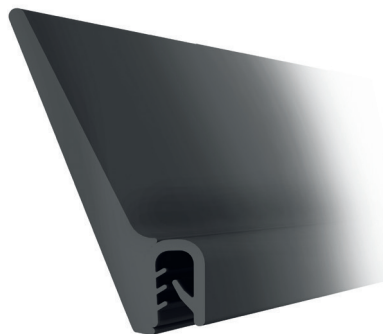
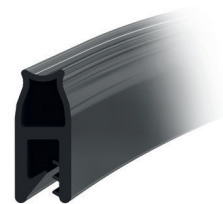
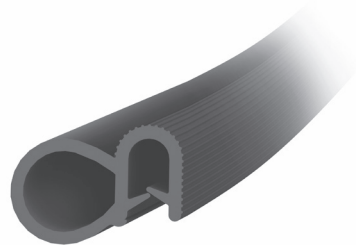


LOCKING LATCHES IN ALL SHAPES AND SIZES



## GASKETS

GASKET MATERIAL: FOAM RUBBER EPDM – CLAMP MATERIAL: STEEL



**HVAC COMPONENTS**

SPECIALLY DESIGNED AND SELECTAD FOR HVAC APPLICATIONS



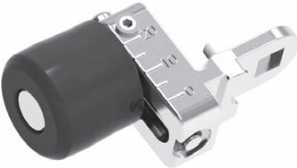
LATCHES



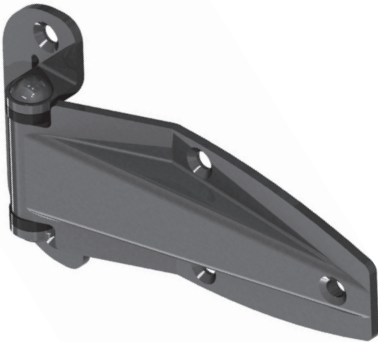
HANDLES



ACESSORIES



LOCKS



HINGES

# TANlock

Physical access control is vital for datacenter security, safeguarding data from unauthorized access, sabotage, and environmental threats like fire or dust. Sensors mitigate environmental risks, but insider threats or intruders demand robust access management. Datacenters use layered security (cameras, badge readers, guards), yet server cabinets remain vulnerable to unauthorized employee access, risking data theft or manipulation. Advanced access control with real-time monitoring ensures GDPR compliance and data protection.

TANlock 3, the modular electromechanical locking system, secures server racks with interchangeable authentication modules (PIN, RFID, fingerprint, hand vein) supporting two-factor authentication. It integrates with LDAP, MS ActiveDirectory, Syslog, SNMP, and APIs for real-time access monitoring and logging, ensuring GDPR compliance. With IP65 protection against dust and water, TANlock 3 suits indoor and outdoor racks, preventing unauthorized access and reducing risks of sabotage or breaches, offering a scalable, future-proof security solution.





**FATH GmbH**

Gewerbepark  
Hügelmühle 31  
91174 Spalt  
Germany

P: +49 9175 7909-200  
F: +49 9175 7909-29  
info.de@fath24.com

**FATH Inc.**

6533 Hazeltine National  
Drive, Suite 3  
Orlando, FL 32822  
USA

P: +1 407 601-5900  
F: +1 407 601-5905  
info.us@fath24.com

**FATH Machine Components  
(Shanghai) Co., Ltd.**

Building B5, No. 915 Qian  
Ming East Road  
201501 Jinshan / Shanghai  
PR China

P: +86 21 5774 4520  
info.cn@fath24.com

**FATH Kft.**

Gyár u. 2  
2040 Budaörs  
Hungary

P: +36 23 880-977  
F: +36 23 880-978  
info.hu@fath24.com

**FATH Components Ltd.**

6 Pegasus Court, North Lane  
Aldershot  
Hampshire  
GU12 4QP  
Great Britain

P: +44 1252 346610  
info.gb@fath24.com

**FATH Inc. S.A. de C.V.**

Av. Central 230, Int. 140  
Los Lermas  
67188 Guadalupe, N.L.  
Mexico

P: +52 81 3424-1428  
info.mx@fath24.com

**FATH do Brasil Componentes  
Industriais Ltda**

Rua Santa Mônica, 1106  
Parque Industrial San José  
Cotia - SP  
06715 - 865  
Brazil

P: +55 11 2898-9753  
info.br@fath24.com

**FATH BV**

Rudolf Dieselweg 14  
5928 RA Venlo  
The Netherlands

P: +31 773333555  
F: +31 773333550  
info.nl@fath24.com

**FATH Schweiz AG**

Driesbüelstraße 11  
8808 Pfäffikon  
Switzerland

P: +41 79 577 61 97  
info.ch@fath24.com

**Flowsort BV**

Rudolf Dieselweg 14  
5928 RA Venlo  
The Netherlands

P: +31 850761339  
info@flow-sort.com

ENRICH YOUR WORKING LIFE.